

EXTRAMEDULLARY INTRADURAL SPINAL TUMORS: A REVIEW OF MODERN DIAGNOSTIC AND TREATMENT OPTIONS AND A REPORT OF A SERIES

KENAN ARNAUTOVIC*, ASKA ARNAUTOVIC

Seminis Murphy Clinic and Department of Neurosurgery,
University of Tennessee, Memphis, TN, USA

* Corresponding author

ABSTRACT

Extramedullary intradural spinal tumors are rare. Less than 1% of all central nervous system (CNS) tumors are spinal. Ninety percent of these patients are older than 50 years. Most of spinal tumors are extradural (50-55%), whereas 40-45% are intradural. Furthermore, 5% are intramedullary and 40% are extramedullary. Most common are Schwannomas (29%), followed by meningiomas (25%) and gliomas (22%).

These tumors produce pain syndromes, a variety of neurological symptoms- motor, sensory, sphincter or a combination of the two. All spinal levels may be involved. The diagnostics includes magnetic resonance imaging (MRI) including contrast enhancement, computerized tomography (CT) scanning (bone windows with reconstruction) and possibly CT myelograms. Preferred treatment is the microsurgical radical resection. Postoperative mortality is very low as is serious morbidity.

We herein discuss various aspects of presenting symptomatology, diagnostics, preoperative planning and tactics, surgical treatment and complications. In addition, we include our own retrospective experience with 11 patients treated over the 5.5 years time interval.

KEY WORDS: spine, spinal cord; tumors, intradural, extramedullary; meningiomas; Schwannomas, ependymomas

INTRODUCTION

Spinal tumors comprise 15% of all CNS tumors. Their annual incidence is 2-10 per 100,000. Ninety percent of these patients are older than 20 years. Most common spinal tumor location is extradural (55-60%), where cancer metastasis to spine leads the way. Primary vertebral bone tumors are less frequent extradural spinal tumors (1-4). Extradurally, intradural spinal tumors (EISTs) are rare. They comprise about 40-45% of all spinal tumors. They are distinguished from intramedullary tumors by their extra-axial location. First recorded resection of EIST has been done by Sir Victor Alexander Haden Horsley (1888) in a 42 year old patient. The lesion has been originally classified as fibrousxoma, but was probably a degenerated Schwannoma (5). The mean age of patients with EISTs is 46 years and 54.7% of them are male. Their annual incidence is 0.4 per 100,000 population. An average neurosurgeon may see 1-2 EISTs patients per year, a neurologist 1 patient every 5-6 years, whereas every third general practitioner will see a case during their career (3, 6).

Presenting signs and symptoms

Median time to diagnosis is 12 months and cauda equina location is not presenting earlier than other spinal locations. The symptoms are lesion nonspecific and do not differ between intramedullary and extramedullary locations. Most common initial symptom is pain, which may be local and nocturnal, or radiating to arm and/or leg. Sphincter dysfunction, paraparesis and erectile dysfunction occur in 30%, 12%, and 20% of patients respectively (3, 6, 7).

Diagnostics

Primary diagnostic modality for EISTs is magnetic resonance imaging (MRI), without and with contrast enhancement. Diagnostics also include plain X-ray imaging in anterior-posterior, lateral and dynamic (flexion, extension) projections. Furthermore, computerized tomography (CT) scan, thin cuts with reconstructions ("bone windows"), are important to evaluate bony anatomy. In patients who could not undergo MRI scanning, CT myelography is an alternative. Most common tumors within the EISTs group are meningiomas, nerve sheath tumors, and filum terminale ependymomas, making up to 85% of this group (3). Dumbbell appearance accounts for 18% of EISTs with

cervical location being most common. Most common tumors with dumbbell appearance are Schwannomas (60%) followed by neurofibromas (12%). Least common dumbbell appearance have meningiomas (5%) (8).

Meningiomas

Meningiomas arise from arachnoid cap cells embedded in dura near the spinal nerve root sleeve. They are second most common EISTs. Their predominant spinal canal location is lateral. Other cells of origin may be fibroblasts associated with the dura or pia. In this case the tumor has a ventral dural origin. Frequently the attachment to dura is broad based. Most common patients' age interval is between fifty and seventy years although any age group may be involved. They are more common in women (75-85%) and in the thoracic location (80%). In 75% of meningiomas, calcifications were registered. Most commonly they are solitary although (1-2%) may be multifocal, particularly in neurofibromatosis (NF1) patients. Majority of spinal meningiomas are intradural, although (10%) may involve extradural location. Spinal meningiomas are iso- or hypointense on T1 weighted images and slightly hyperintense or hypointense on T2 weighted MRI. Upon contrast application they enhance vividly (except for a calcified part) and frequently display a "dural tail" sign. Only 5% of meningiomas may present in a dumbbell shape (1, 4, 6, 14).

Nerve sheath tumors

Spinal nerve sheath tumors (SNSTs) include Schwannomas, neuroomas, neurinoma, neurilemmomas and neurofibromas. They are most frequent EISTs. Schwannomas are composed of Schwann cells with fibrous tissue. These tumors may show cystic degeneration and hemorrhage. They usually displace nerve roots. If they are multiple, they may be associated with NF1 patients. Neurofibromas are composed of Schwann cells, fibroblasts, and nerve fibers in a matrix of mucopolysaccharides, lipid and fibrous material. Typically SNSTs are found on the dorsal sensory roots which they encase. There is no gender predilection. Most commonly they are seen in cervical and lumbar regions; less frequently in the thoracic spinal segment. Predominantly they have an intradural location but 25% are completely extradural and 15% are intra-extradural. Their peak incidence is fourth decade of life. Ninety % of these tumors are benign. Multiple tumors are typical for NF1 patients. SNSTs are isointense on T1 weighted MRIs and have hyperintense signal on T2 weighted

images. Upon contrast application enhancement is variable. SNST may present in a dumbbell shape, if they do, there is a 80% chance that a tumor is a SNST. If they reach a large size, they may remodel intravertebral foramen or even erode or cause scalloping of the posterior aspect of the vertebral body (1, 3, 7-14, 17).

Filum terminale ependymomas

Fifty percent of all ependymomas are spinal. Within spinal ependymomas, 50% are intramedullary and another 50% are located within terminal filum. Despite the neuroectodermal origin of filum terminale, from anatomical and a surgical perspective it is appropriate to group them with EISTs. Filum terminale ependymomas arise from ependymal rests in filum terminale and are of myxopapillary histologic variant. They can occur at any age but most commonly between 3rd and 5th decades. These tumors are well circumscribed and seldom infiltrate the dura. After radical resection recurrence is generally rare although subarachnoid seeding is possible. On T1 weighted images they are hypo- or isointense and are hyperintense on T2 weighted MRIs. Homogenous or heterogenous enhancement is seen upon contrast application (3, 9, 11, 12).

Preoperative planning and treatment

EISTs can significantly compress and displace the spinal cord, the nerve roots or even the surrounding structures (eg the vertebral artery). This can impact preoperative neurologic presentation and operative morbidity. Gross total tumor resection while preserving and improving neurologic function is the usual goal of surgery. This can be achieved in great majority of cases. Intraoperative monitoring, somatosensory evoked potentials (SSEP) and motor evoked potentials (MEP) may be utilized. Intraoperative ultrasound may at times be useful to evaluate intra-operative extent of lesion and radicality of surgery. After a detailed clinical, neurologic and neuroradiologic evaluation, the operative approach is planned. Approaches are based upon location of the tumor, its extension, its size and other parameters. The goal is to provide maximal intra-operative exposure of the tumor, while minimizing damage to the surrounding structures. Excessive removal of bony structures and ligaments may result in spinal instability (4, 5, 14, 15, 17). A normal spine remains stable as long as two out of the three columns remain undisturbed. The anterior column consists of the anterior half of the vertebral body, the anterior half of the intervertebral disk

and the anterior longitudinal ligament. The middle column consists of the posterior half of the vertebral body, the posterior half of the intervertebral disk and the posterior longitudinal ligament. The posterior column includes paired facets, the transverse and spinous processes and the paired laminae (16). For most EISTs resections, the posterior approach with midline incision is sufficient. The patient in prone position and neck and spinal alignment should remain as neutral as possible. Certain cases may require awake, fiberoptic intubation to avoid hyperextension. The extent of incision and exposure is guided with topographic anatomy and intraoperative C-arm x-ray navigation in lateral and anterior-posterior projections. While performing laminectomies, care should be taken to preserve facets, its capsules and intertransverse ligaments to avoid postoperative kyphosis and instability. Otherwise instrument stabilization may be required. Sometimes only hemilaminectomies may suffice for tumor resection. Posterolateral approaches with removal of pedicle and/or costotranssectomy may be necessary for certain ventral thoracic EISTs locations or extraforaminal tumor extensions. Anterior approaches are sometimes needed for ventral cervical locations whereas anterolateral approaches for ventral thoracic EIST locations. Subsequent instrumented fusion is then necessary (4, 5, 14, 15, 17-20). The results of surgery of EISTs are usually excellent. Even long lasting preoperative neurologic deficit may be improved and reversed postoperatively. Most common complications include CSF leak, pseudomeningocele formation and wound infections. Less common is post-operative spinal instability and neurologic deficit (3, 5, 7).

- 1. 5 Schwannomas
 - C2-C3 (4); M
 - T9-T10 (50); F
 - T2 (8); F
 - L1-L5 (32); F
 - S1-S2 (18); M
- 1. 7 meningiomas
 - C1-C3 (75); F
 - C5-C7 (24); F
 - T1-T2 (88); F
 - T5-T6 (62); F
 - T10 (19); M
 - T16 (72); F
 - L2 (69); F
- 1. 2 myxopapillary ependymomas (filum terminale)
 - L3 (16); F
 - L4 (17); F

TABLE 1. Overview of the EISTs tumor types, their ages, the gender and locations in a series of 30 cases. M= male, F= female, C=cervical, T=thoracic, L=lumbar, S=sacral

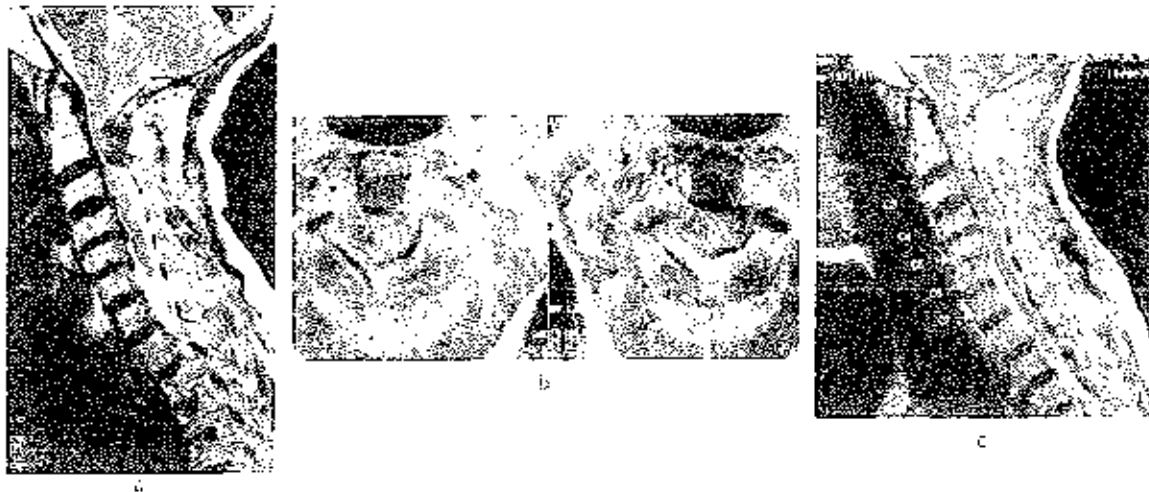


FIGURE 1. 75-year-old with C5-C6 meningioma presenting with quadriplegia, bowel incontinence and T6 sensory level.
 a. Preoperative sagittal T2-weighted MRI showing the hypointense meningioma asterisk.
 b. Preoperative axial postcontrast T1-weighted MRI showing the partially enhanced meningioma asterisk and severely compressed spinal cord away head.
 c. Postoperative sagittal T1-weighted MRI showing radical tumor resection.

17, 21). Recurrence for radically resected SNST was reported to be 10 and 28% after 5 and 15 years respectively (18, 19). In case with residual tumor and/or recurrence, radiation treatment or radiosurgery may be utilized (22, 23). Chemotherapy may be used in malignant FISTs (3).

Our Series

Over the period of 5 and one half years (September, 02-March, 09), the senior author has operated on 14 cases

of EFNs. There were 3 men and 11 women. Their age range was 24-84 years with a mean of 56 years. Two patients were septuagenarians and two octogenarians. Most common were meningiomas (7 cases- 50%), 5 were Schwannomas, and 2. (Intracranial myxopapillary ependymomas. Follow up range was 1-67 months with a mean of 28 months. The overview of tumor types, ages, gender and locations are presented on Table 1. Four representative cases are demonstrated in Figures 1-4.

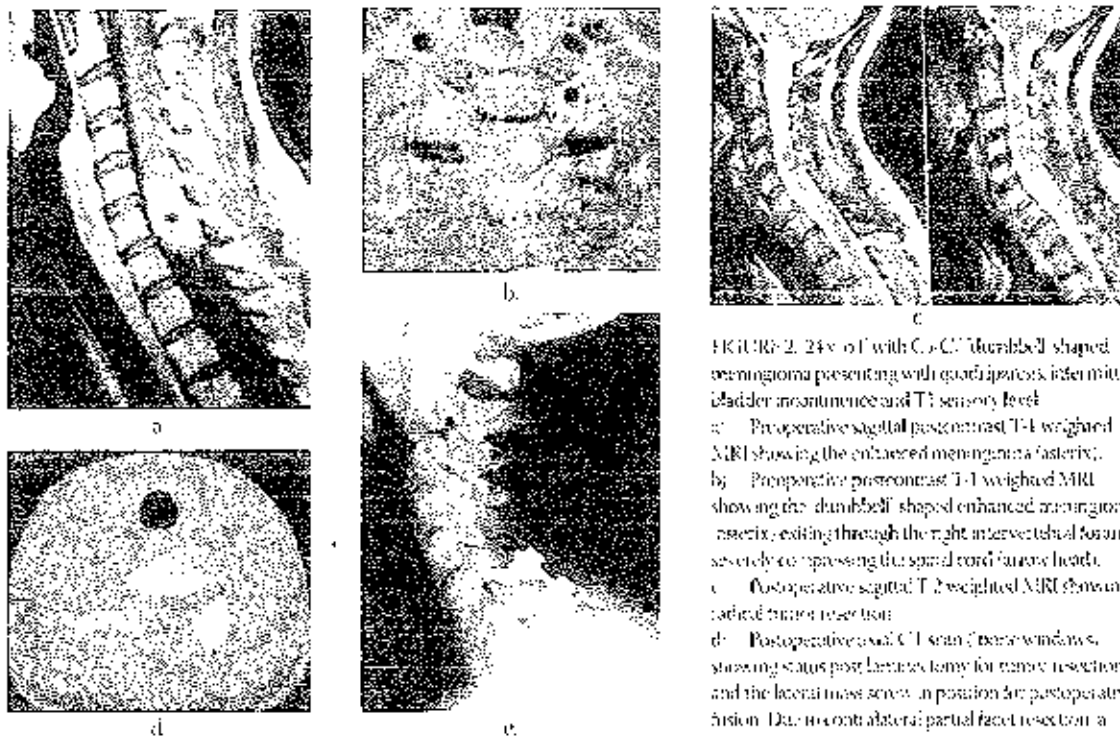


FIGURE 2. 24-year-old with C5-C6 dumbbell shaped meningioma presenting with quadriplegia, intermittent bladder incontinence and T6 sensory level.
 a. Preoperative sagittal postcontrast T1-weighted MRI showing the enhanced meningioma asterisk.
 b. Preoperative postcontrast T1-weighted MRI showing the dumbbell shaped enhanced meningioma asterisk, exiting through the right intervertebral foramen severely compressing the spinal cord (arrow head).
 c. Postoperative sagittal T2-weighted MRI showing radical tumor resection.
 d. Postoperative axial CT scan (bone windows) showing status post laminectomy for tumor resection and the lateral mass screw in position for postoperative fusion. Ductal contralateral partial facet resection; a potential instability was created and the spinal segment needed to be fixed by instrumentation.

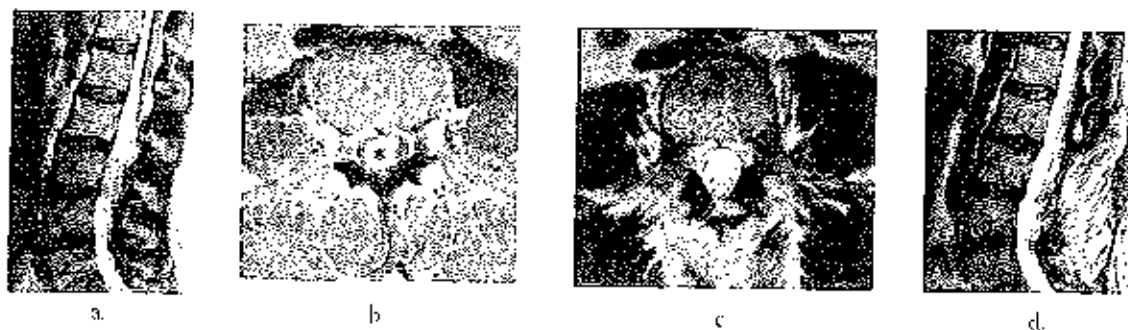


FIGURE 3. 47-year-old with filum terminale myxopapillary ependymoma presenting with paraparesis, bowel incontinence and L2 sensory level.
 a. Preoperative sagittal T1-weighted MRI showing the isointense ependymoma (asterisk) compressing the cauda equina nerves.
 b. Preoperative post-contrast axial T1-weighted MRI showing the enhanced ependymoma occupying about 90% of the spinal canal.
 c. Postoperative axial T2-weighted MRI showing the radical tumor resection.
 d. Postoperative sagittal T2-weighted MRI showing the radical tumor resection.

Postoperative lateral C-spine x-ray showing good spinal alignment and instrumentation in position. Except for 4 patients with Schwannomas who presented with pain and numbness at their appropriate levels and nerve distributions, all other patients presented with a quadriplegia or paraparesis with the corresponding sensory level and sphincter involvement. All patients were treated in a prone position, with an microsurgical technique. For the cervical spinal LIS's locations, the head of the patient was secured in a 3-point head fixation. Radical tumor resection was confirmed on postoperative MRI scans in all patients. No tumor recurrence was noted during a mean follow-up of well over 9 years (48 months). All patients completely recovered their neurologic deficit after the surgery during the follow-up period. One patient with sacral Schwannoma developed pseudomeningocele 7 weeks after the surgery and was treated with surgical revision and external lumbar CSF drainage and resolved completely. There were neither perioperative nor follow-up mortalities. Utilizing microscope and microsurgical technique provides the magnification, the illumination, the stereo-

tactic vision, the communication with the remaining surgical team and the education of trainees. A cavitytron ultrasonic aspirator (CUSA) may be used for debulking of the tumor. Dural opening should extend beyond the tumor limits proximally and distally and may be midline or off midline. First, proximal dural opening with the release of CSF should be done. This is to avoid cauda equina nerves herniation in dorsal direction. Section of one or more dentate ligaments frequently aids resection. A watertight dural closure is very important to prevent pseudomeningocele formation or cerebrospinal fluid (CSF) leak with resulting meningitis and infection. We have utilized harvest of 5 to 6 cc of abdominal fat graft via a small, 1-inch incision at the beginning of surgery. This fat tissue was used at closure to obliterate the epidural "dead space." We postulate that resulted in the absence of CSF leaks or pseudomeningocele formation in our series (except the case of sacral Schwannoma where we did not utilize this maneuver). Frequently, for resection of nerve sheath tumors, sacrifice of the parent nerve may be necessary. Fortunately, this is frequently a sensory branch and ventral motor

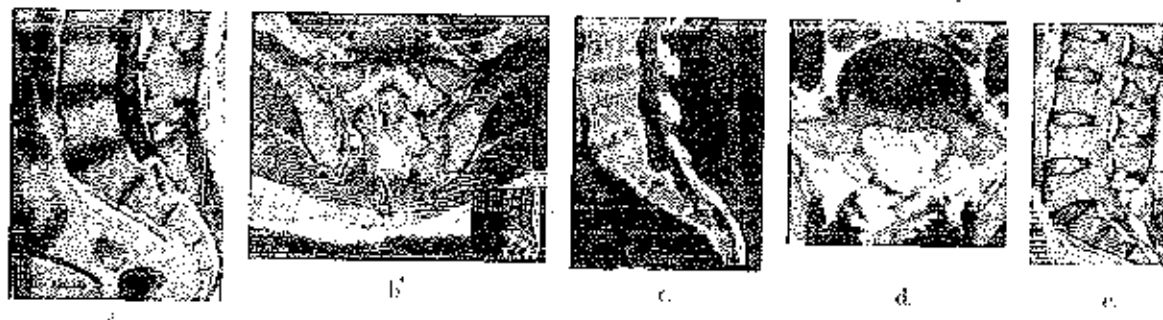


FIGURE 4. 48-year-old presenting with perineal numbness, erection failure and severe low back pain with S1-S3 Schwannoma.
 a. Preoperative sagittal post-contrast T1-weighted MRI showing the enhancing Schwannoma (asterisk).
 b. Preoperative coronal T2-weighted MRI showing the dumbbell-shaped Schwannoma (asterisk).
 c. Preoperative sagittal reconstruction CT scan (bone windows) showing the scalloping of sacrum (arrow heads).
 d. Postoperative axial T2-weighted MRI showing radical tumor resection.
 e. Postoperative T1-weighted MRI showing radical tumor resection.

branch may be preserved with a gentle microsurgical dissection. In meningiomas, early interruption of broad based tumor attachment to the dura provides bloodless surgery. Preserving arachnoid planes while dissecting the tumor minimizes risk of postoperative neurologic

deficit. In myxopapillary ependymomas, after the tumor dissection, proximal division of filum terminale is recommended first. This is to avoid sudden tumor retraction proximally beyond the dorsal opening, should the division of the filum terminale is done distally first.

CONCLUSION

LSTs can be radically resected with no mortality and minimal perioperative morbidity. Thorough perioperative planning, meticulous microsurgical techniques and early mobilization and rehabilitation are essential for good clinical outcomes.

CSF leak and pseudomeningocele formation could be prevented with meticulous dual closure, fat grouting for obliteration of the dead space and 48 hours postoperative bed rest. Patients tend to completely recover their preoperative neurologic deficits even in the case of longstanding preoperative neurological deficit. Advanced age does not seem to preclude eligibility for surgery.

REFERENCES

1. Van Geelhan TW, Sluiter H, Grooten G, de Bont J, van Amelsvoort PM. Spinal tumours. *Br J Radiol*. 2004; 31: 116-126.
2. Boffi PP, Googe DJ, Limor RL, Thompson DE, Carpenter LT, O'Connell D. Spinal meningiomas. *Case Report*. *J Clin Oncol*. 2000; 18: 185-188.
3. Zevaloff SM. Intracanalicular, intradiscal, and extramedullary tumors. In: Vaccaro AR, Deyo RK, Zevaloff SM, editors. *Principles and practice of spine surgery*. St Louis: Mosby; 2003. pp. 221-230.
4. Park A-T, Lee J, Farny LT, Weinstein P, McCormick PJ, Ames C. Spinal cord and intracanal-extradural spinal tumours: current best care practices and strategies. *J Neuro Oncol*. 2012; 69: 391-396.
5. McKenzie W, Kane PL, Finkel M, Chorghani HA. Spinal intracanal tumors. Part I: extramedullary. *Br J Neurosurg*. 1999; 11: 530-537.
6. Jellinger KA, von Oroschke J, Töpfer HJ, Uhl V, et al. Histologic diagnosis of intraspinal tumors. *Eur J Neurol*. 2003; 16: 861-864.
7. Jellinger KA, Wang HS, Hong H, Park S, Moore JG, Kim CH. Spinal schwannomas: analysis of 40 cases. *J Korean Neurosurg Soc*. 2005; 11: 125-128.
8. Ozawa F, Kosakuni S, Aizawa T, Hoshikawa T, Kawahara C. Spinal dumbbell tumours: an analysis of a series of 218 cases. *J Neurosurg Spine*. 2001; 5: 587-593.
9. Abdul-Kasim K, Thurmer M, McKee J, P. Sathyan P. Intracanal spinal tumours: Current classification and MRI features. *Neuroradiology*. 2008; 59: 301-314.
10. Zimmerman RA, Bilimuk LT. Imaging of tumors of the spinal cord and root. *Radiol Clin North Am*. 1988; 29: 993-1007.
11. Bloomer C, W. Auerman A, Phinck RC. Imaging for spinal tumors and new applications. *Top Magn Reson Imaging*. 2007; 16: 6-17.
12. Fardol D, Sforzo ME, Schiff D, et al. Spinal cord neoplasms: extracanal neoplasms. *Lancet Oncol*. 2007; 8: 22-33.
13. Kostovik L, Popov L, Wachtangov S, et al. MRI-guided tumor resection: magnetic resonance imaging of spinal tumours. *Br J Radiol*. 1990; 63: 1067-1072.
14. Aljosef V, Patani N. Spinal intracanal extramedullary tumours. *Neurosurg Focus*. 2002; 46: 18-23.
15. Yasargil MG, Mumma BJ, Aramian TJ, Roth P. The para-parahemilaminectomy for the removal of extra and intramedullary tumours. *Ann NY Acad Sci*. 1974; 244: 133-144.
16. Denis F. The three-column spine and its significance in the classification of acute thoracolumbar spinal injuries. *Spine*. 1983; 8: 124-133.
17. Sitas Altun S, Senoglu NM, Erincin N, Wozniak RK, Uzunoglu A, et al. Intra-laminar Spinal Cord Schwannoma: Microsurgical management of spinal schwannomas: evaluation of 128 cases. *J Neurosurg Spine*. 2005; 12: 47-57.
18. Kirsch J, Sami M. Surgical results for spinal meningiomas. *Surg Neurol*. 1993; 40: 350-360.
19. Kirsch J, Sami M. Surgery of spinal nerve sheath tumors with special reference to neurofibromatosis. *Neurosurg Focus*. 1998; 15: 279-284.
20. Liu G, Googe B. Cervical neurofibrosarcoma with extracanal compression: surgical management in a series of 37 patients. *Neurosurgery*. 2006; 41: 813-816.
21. Sakai G, Hasegawa C, Menda Y, Kurino A, Seto M, Saraga D, Lagergren I, Torson H, Ross EF. Spinal meningioma surgery in elderly patients with paraplegia or severe paraparesis: a multi-center study. *Neurosurgery*. 2009; 64: 301-306.
22. Dard R, Bui MR, Karamchandrapan P, Gibbs JC, Chang S, et al. Value of Cyberknife radiosurgery for benign intracanal extramedullary spinal tumors. *Neurosurg Focus*. 2006; 38: 61-68.
23. Gristen P, C. Batten S, A. Ohtsuka C, McClure K, Quinn A. Endosurgery for benign intracanal spinal lesions. *Neurosurgery*. 2005; 57: 587-593.